

**FUTINA**

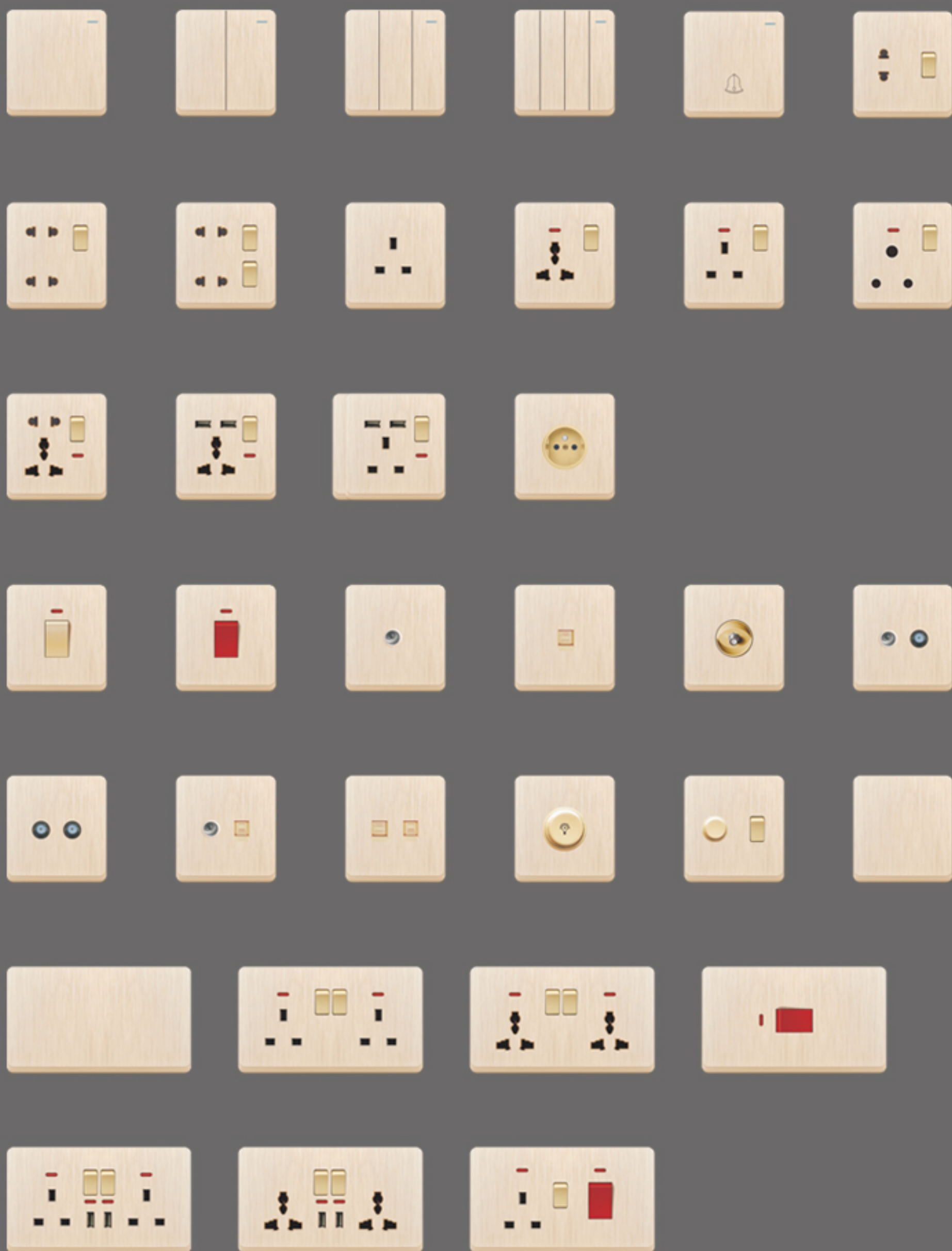
# V12 Series

Beautiful in Its  
Simplicity.

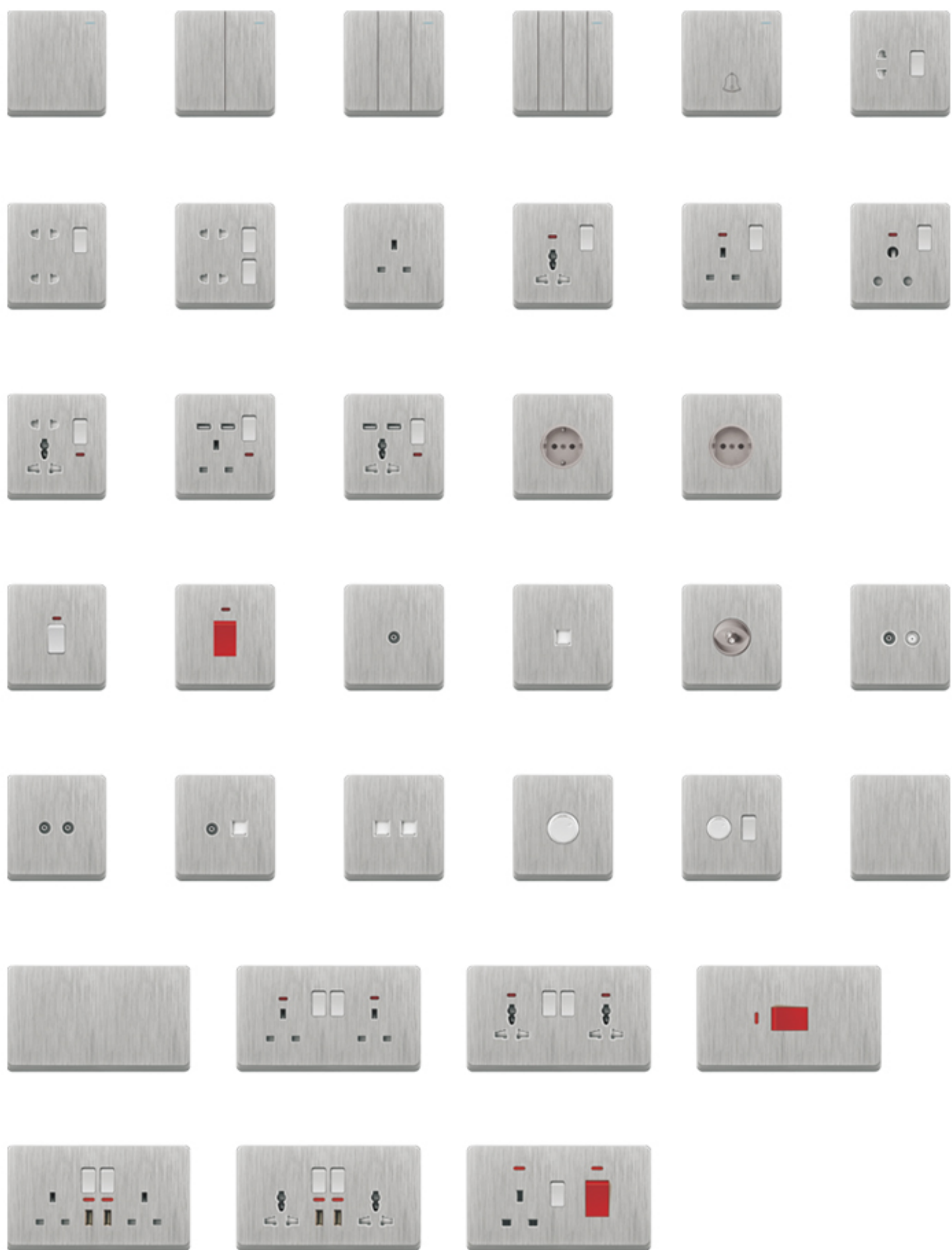




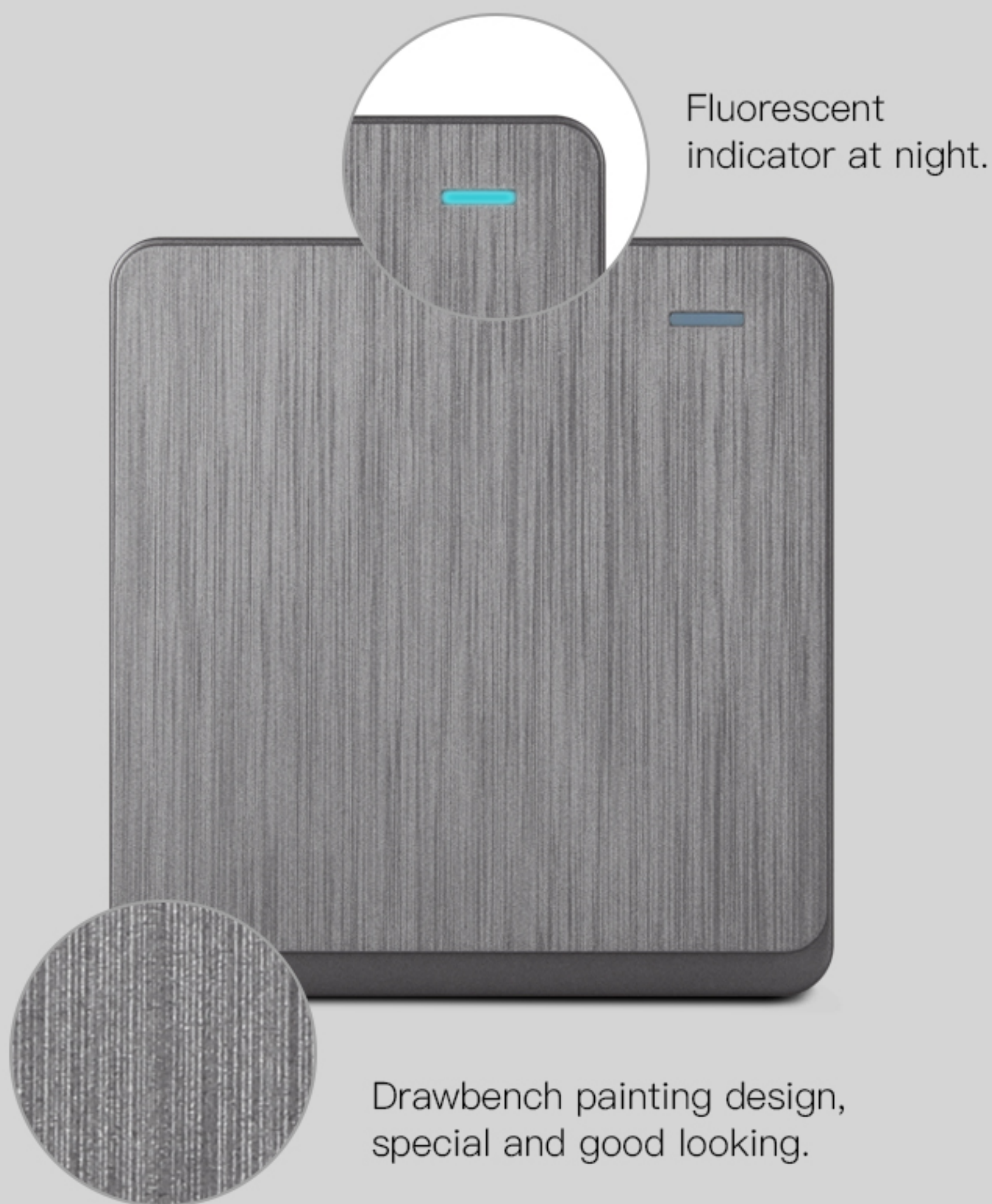
# Product Details



# Product Details



Frameless design with a small edge, perfect to match different deco style.



Fluorescent indicator at night.

Drawbench painting design, special and good looking.



# Flame-Retardant PC, safe and durable.

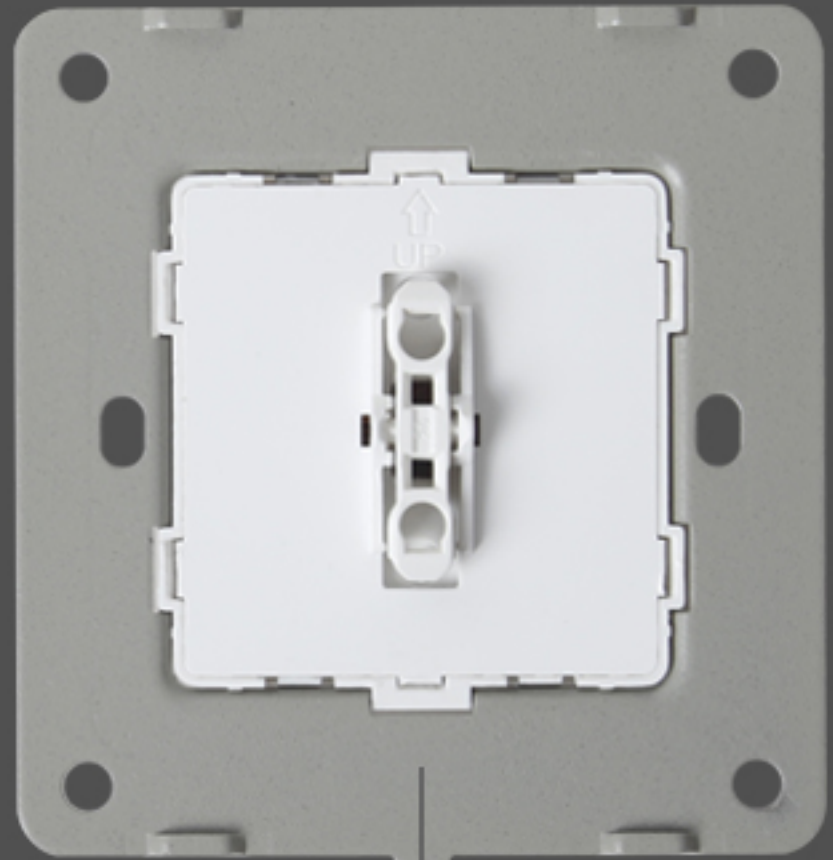


High temperature resistant 850°





Changeable cover  
plate as you like



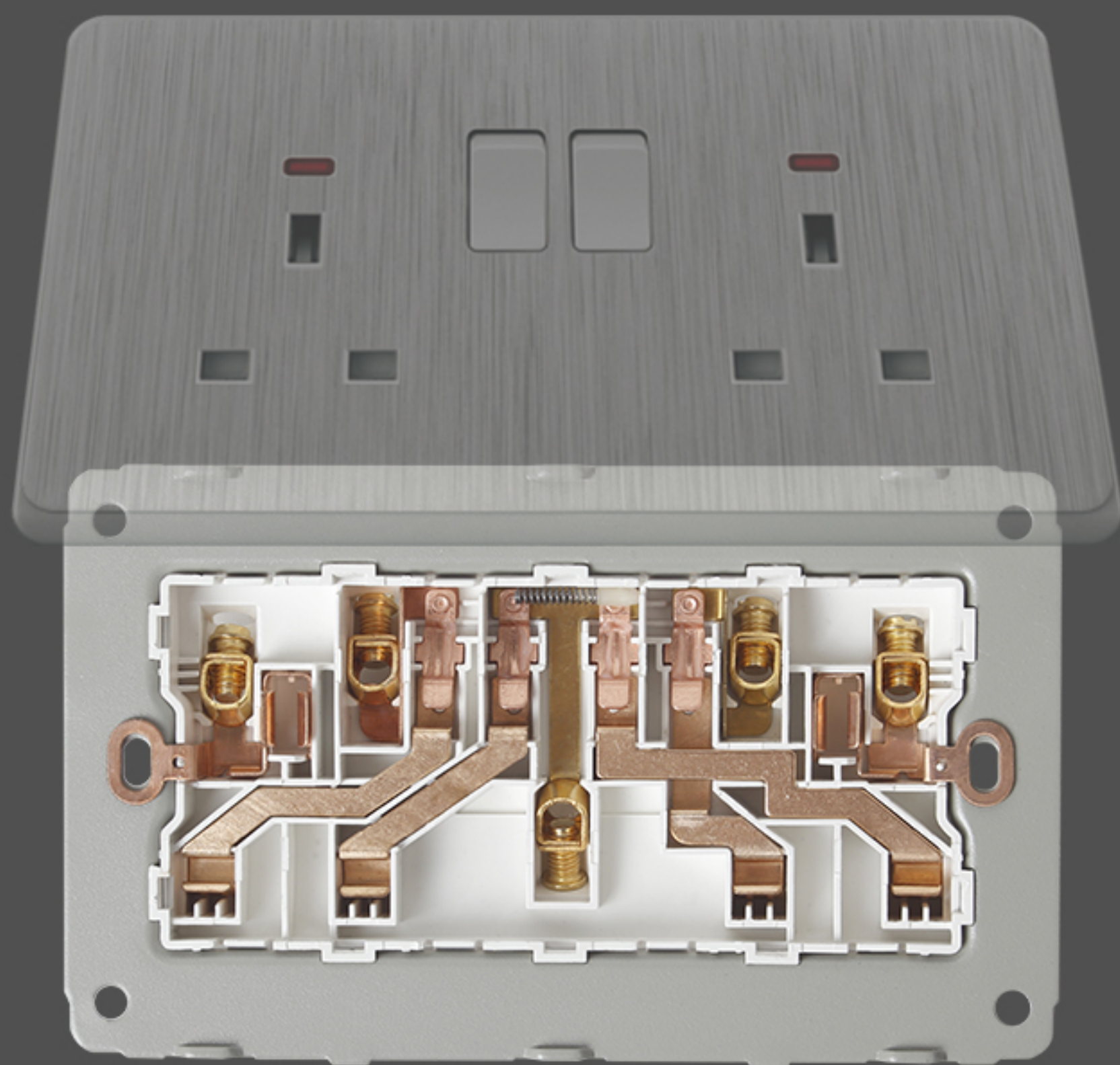
Metal support provide  
good installation



High Quality Red Copper,  
Sensitive Contact



High quality phosphor copper with excellent conductivity and strong elasticity.





2.1A double USB for single and double sockets are available.







[ Golden ]





[ Dark Grey ]





[ Black ]





[ Silver ]

